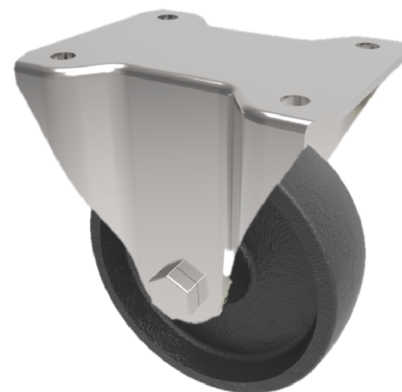


## Cast Iron Plate Fixed Castor 250mm 800kg Load

**Product code: BZPF250CIBJ**

Pressed steel fixed castor with a top plate fixing fitted with a cast iron wheel with ball bearings. Wheel diameter 250mm, tread width 50mm, overall height 292mm, top plate 135mm x 110mm, hole centres 105mm x 80mm. Load capacity 800kg



Diameter (mm)	250
Castor Type	Fixed
Fixing Option	Plate
Height (mm)	292
Wheel Material	Cast Iron
Colour / Shore Hardness	Black Painted Cast Iron
Temperature Resistance	-30 °C TO +80 °C
Bearing Type	Ball
Load Capacity (kg)	800
Tread (mm)	50
Plate Size (mm)	135 x 110
Hole Centres (mm)	105 x 80
Top Plate Thickness (mm)	6
Fork Thickness (mm)	4
To Suit Fixing Bolt (mm)	12

## BIL GROUP LTD

Porte Marsh Road, Calne, Wiltshire, SN11 9BW

Registered in England No: 2603821

VAT Reg: GB572705729

