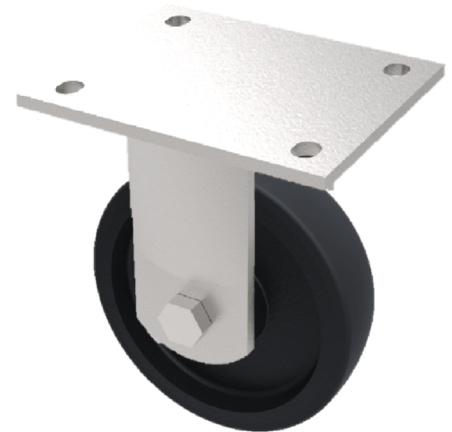


Cast Iron Plate Fixed Castor 200mm 900kg Load

Product code: BZKFL200CI

Fabricated fixed castor with a top plate fixing fitted with a cast iron wheel with a plain bearing. Wheel diameter 200mm, tread width 50mm, overall height 245mm, top plate 138mm x 110mm, hole centres 105mm x 80mm/75mm. Load capacity 900kg. NB the BIL catalogue is incorrect overall height is 245mm.



Diameter (mm)	200
Fixing Option	Plate
Castor Type	Fixed
Bearing Type	Plain
Height (mm)	245
Plate Size (mm)	138 x 110
Hole Centres (mm)	105 x 80/75
To Suit Fixing Bolt (mm)	10
Wheel Material	Cast Iron
Colour / Shore Hardness	Black Painted Cast Iron
Temperature Resistance	-30 °C TO +80 °C
Top Plate Thickness (mm)	7.5
Fork Thickness (mm)	6
Load Capacity (kg)	900
Tread (mm)	50

BIL GROUP LTD

Porte Marsh Road, Calne, Wiltshire, SN11 9BW

Registered in England No: 2603821

VAT Reg: GB572705729

