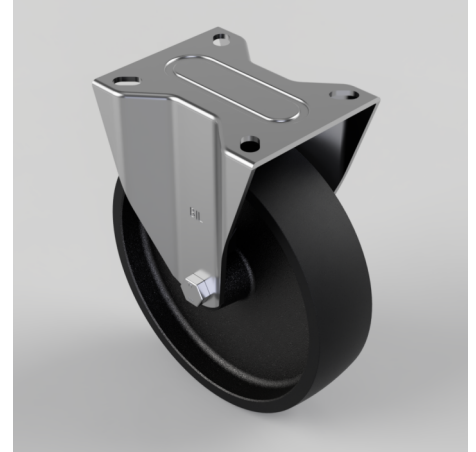


## Cast Iron Plate Fixed Castor 200mm 400kg Load

**Product code: BZMMF200CI**

Pressed steel fixed castor with a top plate fixing fitted with a black cast iron wheel with a plain bore. Wheel diameter 200mm, tread width 50mm, overall height 235mm, top plate 135mm x 110mm, hole centres 105mm, x 80mm. Load capacity 400kg.



Diameter (mm)	200
Castor Type	Fixed
Fixing Option	Plate
Height (mm)	235
Wheel Material	Cast Iron
Colour / Shore Hardness	Black Painted Cast Iron
Temperature Resistance	-30 °C TO +80 °C
Bearing Type	Plain
Load Capacity (kg)	400
Tread (mm)	50
Plate Size (mm)	135 x 110
Hole Centres (mm)	105 x 80
Top Plate Thickness (mm)	3.5
Fork Thickness (mm)	3.5
To Suit Fixing Bolt (mm)	10

## BIL GROUP LTD

Porte Marsh Road, Calne, Wiltshire, SN11 9BW

Registered in England No: 2603821

VAT Reg: GB572705729

