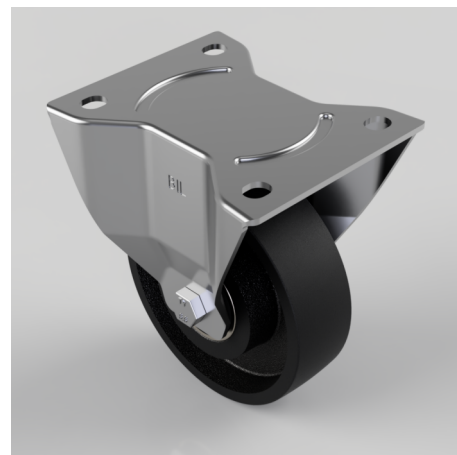


Cast Iron Plate Fixed Castor 125mm 400kg Load

Product code: BZPHF125CIBJ

Pressed steel fixed castor with a top plate fixing fitted with a cast iron wheel with ball bearings. Wheel diameter 125mm, tread width 38mm, overall height 158mm, top plate 135mm x 110mm, hole centres 105mm x 80/75mm. Load capacity 400kg.



| | |
|--------------------------|-------------------------|
| Diameter (mm) | 125 |
| Castor Type | Fixed |
| Fixing Option | Plate |
| Height (mm) | 158 |
| Wheel Material | Cast Iron |
| Colour / Shore Hardness | Black Painted Cast Iron |
| Temperature Resistance | -30 °C TO +80 °C |
| Bearing Type | Ball |
| Load Capacity (kg) | 400 |
| Tread (mm) | 38 |
| Plate Size (mm) | 135 x 115 |
| Hole Centres (mm) | 105 x 80/75 |
| Top Plate Thickness (mm) | 3 |
| Fork Thickness (mm) | 3 |
| To Suit Fixing Bolt (mm) | 10 |

BIL GROUP LTD

Porte Marsh Road, Calne, Wiltshire, SN11 9BW

Registered in England No: 2603821

VAT Reg: GB572705729

