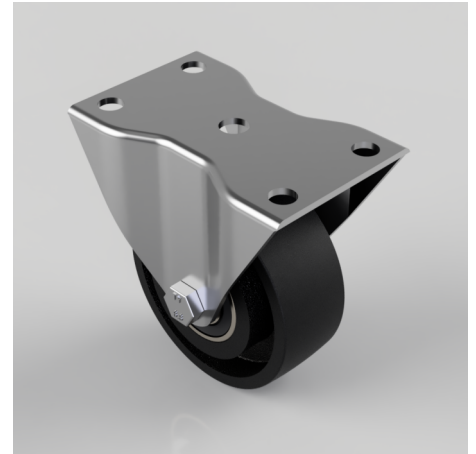


Cast Iron Plate Fixed Castor 100mm 250kg Load

Product code: BZHF100CIBJLP

Pressed steel fixed castor with a top plate fixing fitted with a black cast iron wheel with ball bearings. Wheel diameter 100mm, tread width 38mm, overall height 126mm, top plate 122mm x 77mm, hole centres 100mm x 48mm. Load capacity 250kg. (not high temp)



Diameter (mm)	100
Castor Type	Fixed
Fixing Option	Plate
Height (mm)	127
Wheel Material	Cast Iron
Colour / Shore Hardness	Black Painted Cast Iron
Temperature Resistance	-30 °C TO +80 °C
Bearing Type	Ball
Load Capacity (kg)	250
Tread (mm)	38
Plate Size (mm)	122 x 77
Hole Centres (mm)	100 x 48
Top Plate Thickness (mm)	3
Fork Thickness (mm)	3
To Suit Fixing Bolt (mm)	10

BIL GROUP LTD

Porte Marsh Road, Calne, Wiltshire, SN11 9BW

Registered in England No: 2603821

VAT Reg: GB572705729

