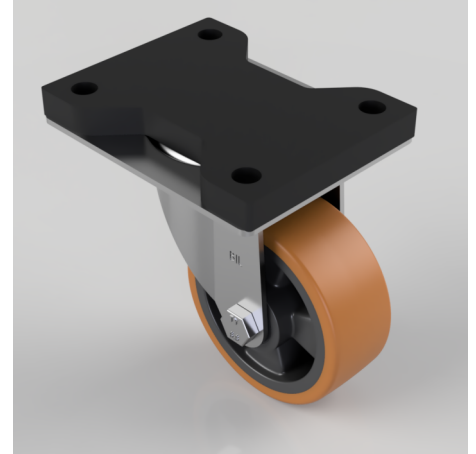


Brown Polyurethane Swivel Plate Castor 100mm 300kg

Product code: BZEH100XPNBFP

Pressed steel swivel castor with a top plate fixing fitted with a brown polyurethane tyre on black nylon centred wheel with a roller bearing. Wheel diameter 100mm, tread width 40mm, overall height 142mm, plate size 135mm x 105mm, hole centres 105mm x 80mm. Load capacity 300kg



Fixing Option	Plate
Diameter (mm)	100
Load Capacity (kg)	300
Castor Type	Swivel
Height (mm)	142
Wheel Material	Polyurethane on Nylon
Colour / Shore Hardness	Brown Polyurethane on Nylon Rim / 96 Shore A
Bearing Type	Roller
Tread (mm)	40
Fork Thickness (mm)	3
Temperature Resistance	-20 °C TO +80 °C
Plate Size (mm)	135 x 105
Hole Centres (mm)	105 x 80
Swivel Radius (mm)	90
Top Plate Thickness (mm)	18
To Suit Fixing Bolt (mm)	10

BIL GROUP LTD

Porte Marsh Road, Calne, Wiltshire, SN11 9BW

Registered in England No: 2603821

VAT Reg: GB572705729

