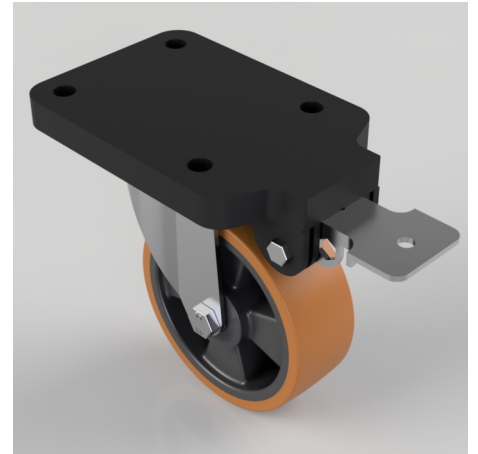


## Brown Polyurethane Swivel Braked Plate Castor 125mm 300kg

**Product code: BZEH125XPNBFPSWB**

Pressed steel fixed castor with a top plate fixing fitted with a brown polyurethane tyre on black nylon centred wheel with roller bearings and a fixed position total lock brake, Wheel diameter 125mm, tread width 45mm, overall height 170mm, top plate 180mm x 115mm, hole centres 105mm x 80mm Load capacity 300kg



Fixing Option	Plate
Diameter (mm)	125
Load Capacity (kg)	300
Castor Type	Swivel with Fixed Position Total Lock Brake
Height (mm)	170
Wheel Material	Polyurethane on Nylon
Colour / Shore Hardness	Brown Polyurethane on Nylon Rim / 96 Shore A
Bearing Type	Roller
Tread (mm)	45
Fork Thickness (mm)	3
Temperature Resistance	-20 °C TO +80 °C
Plate Size (mm)	180 x 115
Hole Centres (mm)	105 x 80
Swivel Radius (mm)	164
Top Plate Thickness (mm)	18
To Suit Fixing Bolt (mm)	10

## BIL GROUP LTD

Porte Marsh Road, Calne, Wiltshire, SN11 9BW

Registered in England No: 2603821

VAT Reg: GB572705729

