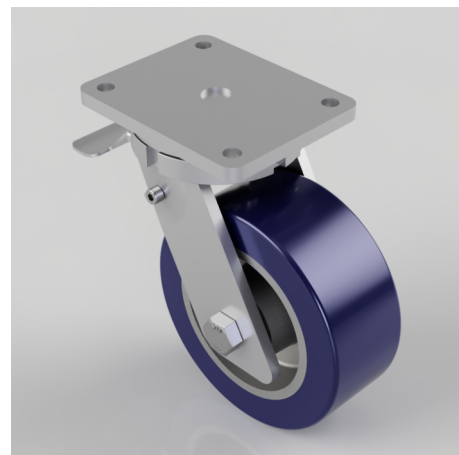


## Blue Polyurethane on Cast Iron Plate Swivel Braked Castor 200mm 1200kg Load

**Product code: BZQ200SPUCBJSWB**

Fabricated swivel braked castor with a flat plate fixing fitted with a 75 shore A 'extra soft' blue polyurethane on cast iron centred wheel with ball bearings. Wheel diameter 200mm, tread width 80mm, overall height 264mm, plate size 175mm x 140mm, hole centres 140mm x 105mm. Load capacity 1200kg at 4kph, 480kg at 10kph and 420kg at 16kph \*\* FOR INTERNAL AND EXTERNAL TOWING USE\*\*



Diameter (mm)	200
Fixing Option	Plate
Castor Type	Swivel with Total Lock Brake
Bearing Type	Ball
Height (mm)	264
Plate Size (mm)	170 X 140
Hole Centres (mm)	140 X 105
To Suit Fixing Bolt (mm)	14
Wheel Material	Polyurethane on Cast Iron
Colour / Shore Hardness	Blue Ergonomic Polyurethane on Cast Iron Rim / 75 Shore A
Temperature Resistance	-30 °C TO +80 °C
Top Plate Thickness (mm)	12
Fork Thickness (mm)	10
Swivel Radius (mm)	167
Load Capacity (kg)	1200
Tread (mm)	80

## BIL GROUP LTD

Porte Marsh Road, Calne, Wiltshire, SN11 9BW

Registered in England No: 2603821

VAT Reg: GB572705729

