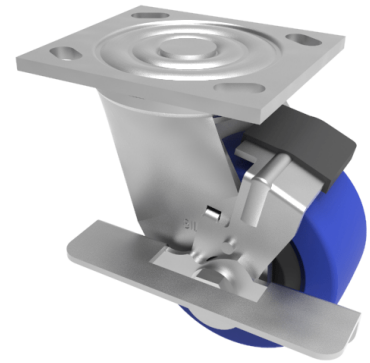


Blue Elastic Rubber Plate Swivel Castor Brake 125mm 275kg Load

Product code: BZJ125SRNBJBK/USA

Fabricated swivel castor with a flat plate fixing fitted with 65 shore A blue elastic rubber tyre on black nylon centred wheel with ball bearings and side fitting wheel brake. Wheel diameter 125mm, tread width 50mm, overall height 165mm, top plate 115mm x 102mm, hole centres 92mm x 67mm or 76mm x 76mm, load capacity 275kg. REACH compliant also PAH-Free rubber to confirm to EU-directive 2005/69/EC



Diameter (mm)	125
Fixing Option	Plate
Castor Type	Swivel with Wheel Brake
Bearing Type	Ball
Height (mm)	165
Plate Size (mm)	115 x 102
Hole Centres (mm)	76/92 x 76/67
To Suit Fixing Bolt (mm)	10
Wheel Material	Rubber on Nylon
Colour / Shore Hardness	Blue Elastic Rubber on Nylon Rim / 65 Shore A
Temperature Resistance	-30 °C TO +80 °C
Top Plate Thickness (mm)	5.5
Fork Thickness (mm)	5.5
Swivel Radius (mm)	126
Load Capacity (kg)	275
Tread (mm)	50

BIL GROUP LTD

Porte Marsh Road, Calne, Wiltshire, SN11 9BW

Registered in England No: 2603821

VAT Reg: GB572705729

