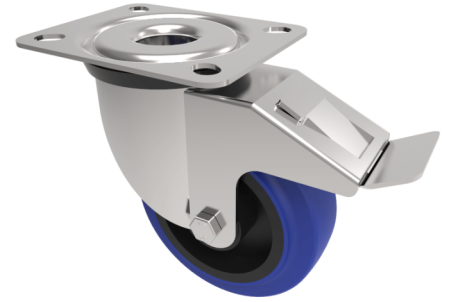


Blue Elastic Rubber 75ShoreA Plate Swivel Castor Brake 100mm 250kg Load

Product code: SSPH100RNBSWB



Grade 304 Pressed stainless-steel swivel castor with a top plate fixing fitted with a 75 shore A blue elastic rubber tyre black nylon centred wheel with a roller bearing and a total lock brake. Wheel diameter 100mm, tread width 38mm, overall height 130mm, top plate 135mm x 110mm, hole centres 105mm x 80/75mm. Load capacity 250kg

Diameter (mm)	100
Fixing Option	Plate
Castor Type	Swivel with Total Lock Brake
Height (mm)	132
Wheel Material	Rubber on Nylon
Colour / Shore Hardness	Blue Rubber on Nylon Rim / 75 Shore A
Bearing Type	Roller
Tread (mm)	38
Fork Thickness (mm)	4
To Suit Fixing Bolt (mm)	10
Load Capacity (kg)	250
Temperature Resistance	-20 °C TO +60 °C
Plate Size (mm)	135 x 110
Hole Centres (mm)	105 x 80/75
Top Plate Thickness (mm)	4
Swivel Radius (mm)	120

BIL GROUP LTD

Porte Marsh Road, Calne, Wiltshire, SN11 9BW

Registered in England No: 2603821

VAT Reg: GB572705729

