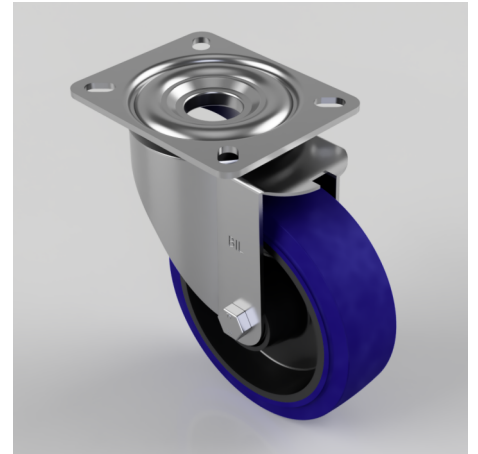


Blue Elastic Rubber 75ShoreA Plate Swivel Castor 150mm 300kg Load

Product code: BZMM150RNB

Pressed steel swivel castor with a top plate fixing fitted with a blue 75 shore A elastic rubber tyre on a black nylon centre with a roller bearing. Wheel diameter 150mm, tread width 50mm, overall height 190mm, top plate 140mm x 110mm, hole centres 105mm x 75mm/80mm. Load capacity 300kg.



Diameter (mm)	150
Castor Type	Swivel
Fixing Option	Plate
Height (mm)	190
Wheel Material	Rubber on Nylon
Colour / Shore Hardness	Blue Rubber on Nylon Rim / 75 Shore A
Temperature Resistance	-20 °C TO +60 °C
Bearing Type	Roller
Load Capacity (kg)	300
Tread (mm)	50
Swivel Radius (mm)	128
Plate Size (mm)	140 x 110
Hole Centres (mm)	105 x 80/75
Top Plate Thickness (mm)	3
Fork Thickness (mm)	3
To Suit Fixing Bolt (mm)	10

BIL GROUP LTD

Porte Marsh Road, Calne, Wiltshire, SN11 9BW

Registered in England No: 2603821

VAT Reg: GB572705729

