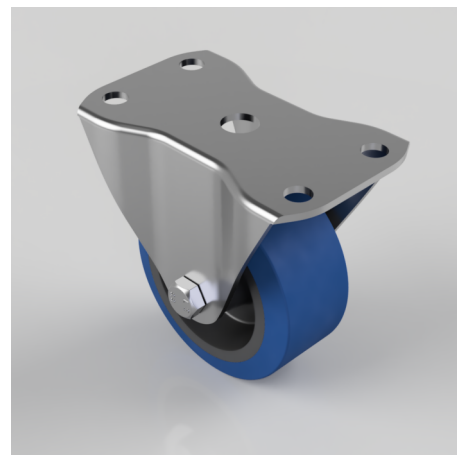


Blue Elastic Rubber 75ShoreA Plate Fixed Castor 75mm 125kg Load

Product code: BZHF75SRN

Pressed steel fixed castor fitted with a 65 shore A blue elastic rubber tyred wheel with a black nylon centre with a plain bore. Wheel diameter 75mm, Tread width 35mm, Overall Height 95mm, Top Plate 102mm x 64mm, Hole Centres 80/83mm x 35mm, Load Capacity 130kg. REACH compliant also PAH-Free rubber to confirm to EU-directive 2005/69/EC



Diameter (mm)	75
Castor Type	Fixed
Fixing Option	Plate
Height (mm)	95
Wheel Material	Rubber on Nylon
Colour / Shore Hardness	Blue Elastic Rubber on Nylon Rim / 65 Shore A
Temperature Resistance	-30 °C TO +80 °C
Bearing Type	Plain
Load Capacity (kg)	125
Tread (mm)	35
Plate Size (mm)	102 x 64
Hole Centres (mm)	80/83 x 35
Top Plate Thickness (mm)	2.5
Fork Thickness (mm)	2.5
To Suit Fixing Bolt (mm)	8

BIL GROUP LTD

Porte Marsh Road, Calne, Wiltshire, SN11 9BW

Registered in England No: 2603821

VAT Reg: GB572705729

