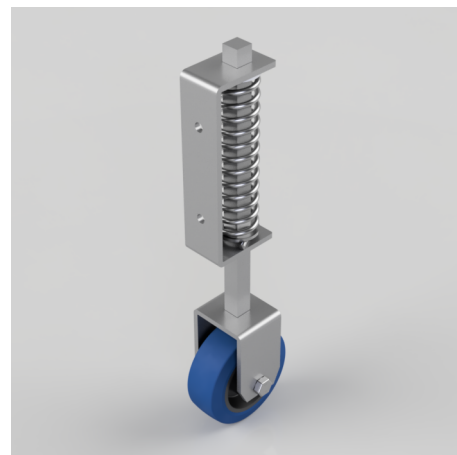


## Blue Elastic Rubber 75ShoreA Gate Castor Fixing Fixed Castor 100mm 75kg

**Product code: BZGCF100RNB**

Fabricated fixed sprung loaded gate castor with a side mounted plate fixing fitted with a blue 75 shore A elastic rubber tyre black nylon centred wheel with roller bearings. Wheel diameter 100mm, Tread width 38mm, Overall height 375mm, Fixing Hole M8 drilled on 85mm centres, Load capacity 75kg, Spring compression starts at 20kg



Diameter (mm)	100
Tread (mm)	38
Castor Type	Fixed
Load Capacity (kg)	75
Bearing Type	Roller
Fixing Option	Plate
Wheel Material	Rubber on Nylon
Colour / Shore Hardness	Blue Rubber on Nylon Rim / 75 Shore A
Height (mm)	375
To Suit Fixing Bolt (mm)	8
Temperature Resistance	-20 °C TO +60 °C

## BIL GROUP LTD

Porte Marsh Road, Calne, Wiltshire, SN11 9BW

Registered in England No: 2603821

VAT Reg: GB572705729

