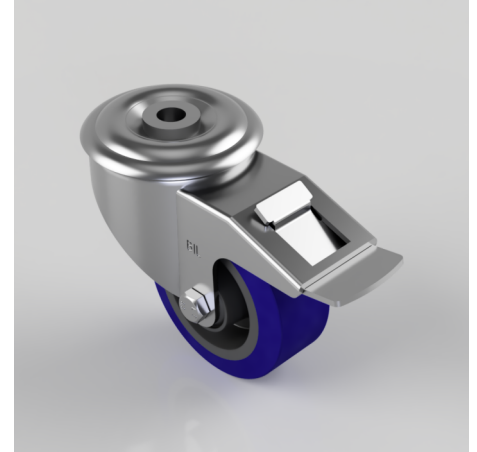


Blue Elastic Rubber 75ShoreA Bolt Hole Swivel Castor Brake 80mm 100kg

Product code: BZMM80LRNBBH12SWB

Pressed steel swivel castor with 12mm bolt hole fitted with a blue 75 shore A elastic rubber tyre on black nylon centred wheel with roller bearing and a total lock brake. Wheel diameter 80mm, tread width 34mm, overall height 105mm, Load capacity 100kg.



Diameter (mm)	80
Castor Type	Swivel with Total Lock Brake
Fixing Option	Bolt Hole
Height (mm)	105
Wheel Material	Rubber on Nylon
Colour / Shore Hardness	Blue Rubber on Nylon Rim / 75 Shore A
Temperature Resistance	-20 °C TO +60 °C
Bearing Type	Roller
Load Capacity (kg)	100
Tread (mm)	34
Swivel Radius (mm)	112
Head Dia (mm)	76
Fork Thickness (mm)	2.5
To Suit Fixing Bolt (mm)	12