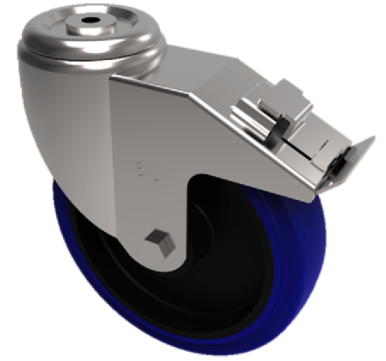


Blue Elastic Rubber 75ShoreA Bolt Hole Swivel Castor Brake 100mm 250kg

Product code: SSEH100RNBBH12SWB

Grade 304 Pressed stainless steel swivel castor with a 12mm bolt hole fitted with a 75 shore A blue elastic rubber tyred black nylon centred wheel with a roller bearing and a total lock brake. Wheel diameter 100mm, tread width 40mm, overall height 130mm, Load capacity 250kg



| | |
|--------------------------|---------------------------------------|
| Diameter (mm) | 100 |
| Fixing Option | Bolt Hole |
| Castor Type | Swivel with Total Lock Brake |
| Height (mm) | 128 |
| Wheel Material | Rubber on Nylon |
| Colour / Shore Hardness | Blue Rubber on Nylon Rim / 75 Shore A |
| Bearing Type | Roller |
| Tread (mm) | 38 |
| Fork Thickness (mm) | 3 |
| To Suit Fixing Bolt (mm) | 12 |
| Load Capacity (kg) | 250 |
| Temperature Resistance | -20 °C TO +60 °C |
| Head Dia (mm) | 78 |
| Swivel Radius (mm) | 115 |

BIL GROUP LTD

Porte Marsh Road, Calne, Wiltshire, SN11 9BW

Registered in England No: 2603821

VAT Reg: GB572705729

