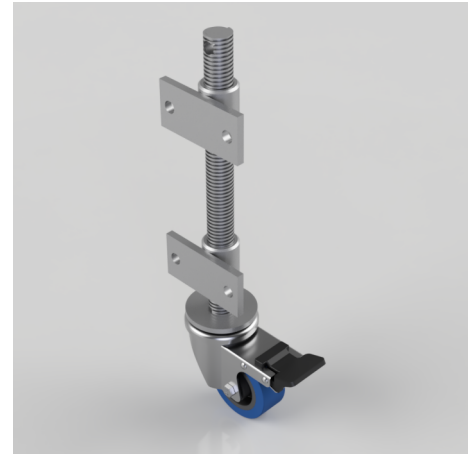


## Blue Elastic Rubber 65ShoreA Plate Swivel Castor Brake Locking Castor 80mm 150kg Load

**Product code: JAB80SRNBSWB**

Open screw thread jacking castor with side fitting nuts with 160mm lift fitted with a 80mm white zinc plated swivel pressed steel castor with a 65 shore A blue elastic rubber tyred black nylon centred wheel with a roller bearing and total lock brake with a load capacity of 150kg Please note Jacking castors are rated on a different principal to other castors and we recommend the total lifted load is divided over just 2 jacking units.1 extra safety point is when jacked up please beware of any obstacles as a sudden shock could result in bending the thread but more likely the castor will tear away from the screw thread also this could also happen if the user forgets to release the brake. Please refer to the BIL catalogue or request a drawing. REACH compliant also PAH-Free rubber to confirm to EU-directive 2005/69/EC



Diameter (mm)	80
Castor Height (mm)	110
Castor Type	Swivel with Total Lock Brake
Swivel Radius (mm)	125
Fixing Option	Plate
Bearing Type	Roller
To Suit Fixing Bolt (mm)	12
Wheel Material	Rubber on Nylon
Colour / Shore Hardness	Blue Elastic Rubber on Nylon Rim / 65 Shore A
Temperature Resistance	-30 °C TO +80 °C
Load Capacity (kg)	150
Tread (mm)	35
Height (mm)	426
Lifting Stroke (mm)	160

## BIL GROUP LTD

Porte Marsh Road, Calne, Wiltshire, SN11 9BW

Registered in England No: 2603821

VAT Reg: GB572705729

