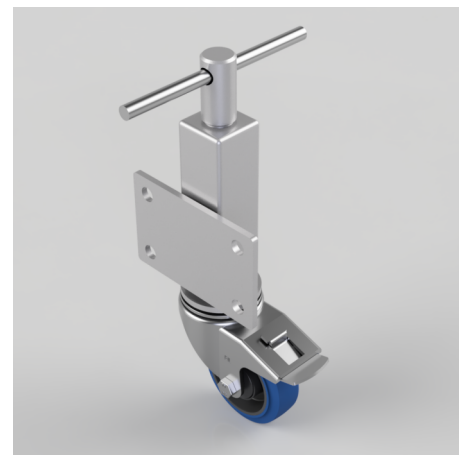


## Blue Elastic Rubber 65ShoreA Plate Swivel Castor Brake Locking Castor 100mm 200kg Load

**Product code: JAZ100SRNBJSWB**

Zinc plated box jacking unit with side fitting plate and a 75mm lift fitted with a 100mm white zinc plated swivel pressed steel castor with a 65 shore A blue elastic rubber tyre black nylon wheel with a ball bearing and total lock brake with a load capacity of 200kg Please note Jacking castors are rated on a different principal to other castors and we recommend the total lifted load is divided over just 2 jacking units. One extra safety point is when jacked up please beware of any obstacles as a sudden shock or leaving the brake on could result in the inner square tube bending around the outer tube. Please refer to the BIL catalogue or request a drawing. REACH compliant also PAH-Free rubber to confirm to EU-directive 2005/69/EC



Diameter (mm)	100
Castor Height (mm)	128
Castor Type	Swivel with Total Lock Brake
Swivel Radius (mm)	120
Fixing Option	Plate
Bearing Type	Ball
To Suit Fixing Bolt (mm)	14
Wheel Material	Rubber on Nylon
Colour / Shore Hardness	Blue Elastic Rubber on Nylon Rim / 65 Shore A
Temperature Resistance	-30 °C TO +80 °C
Load Capacity (kg)	200
Tread (mm)	36
Height (mm)	366 / 441
Lifting Stroke (mm)	75

## BIL GROUP LTD

Porte Marsh Road, Calne, Wiltshire, SN11 9BW

Registered in England No: 2603821

VAT Reg: GB572705729

