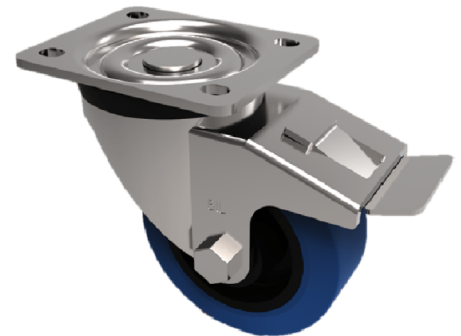


## Blue Elastic Rubber 65ShoreA Plate Swivel Castor Brake 80mm 150kg Load

**Product code: SSEH80SRNSWB**

Grade 304 Pressed stainless steel swivel castor with a top plate fixing fitted with a 65 shore A blue elastic rubber tyred wheel with a black nylon centre with a plain bore and a total lock brake. Wheel diameter 80mm, Tread width 35mm, Overall Height 110mm, Top Plate 105mm x 86mm, Hole Centres 80mm x 60mm, Load Capacity 150kg. REACH compliant also PAH-Free rubber to confirm to EU-directive 2005/69/EC



Diameter (mm)	80
Fixing Option	Plate
Castor Type	Swivel with Total Lock Brake
Height (mm)	110
Wheel Material	Rubber on Nylon
Colour / Shore Hardness	Blue Elastic Rubber on Nylon Rim / 65 Shore A
Bearing Type	Plain
Tread (mm)	35
Fork Thickness (mm)	3
To Suit Fixing Bolt (mm)	8
Load Capacity (kg)	150
Temperature Resistance	-30 °C TO +80 °C
Plate Size (mm)	105 x 86
Hole Centres (mm)	80 X 60
Top Plate Thickness (mm)	3
Swivel Radius (mm)	116

## BIL GROUP LTD

Porte Marsh Road, Calne, Wiltshire, SN11 9BW

Registered in England No: 2603821

VAT Reg: GB572705729

