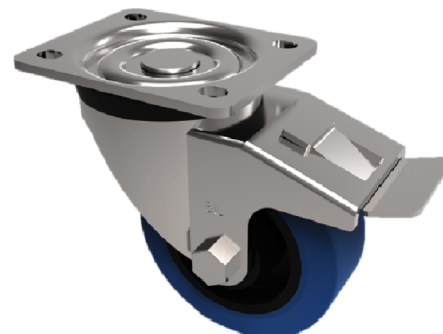


Blue Elastic Rubber 65ShoreA Plate Swivel Castor Brake 125mm 250kg Load

Product code: BZEH125SRNBSWB

Pressed steel swivel castor with flat top plate fixing fitted with a 65 Shore A blue elastic rubber tyre on black nylon centre with roller bearings and a total lock brake. Wheel diameter 125mm, tread width 36mm, overall height 155mm, plate size 105mm x 86mm, hole centres 80mm x 60mm. Load capacity 250kg. REACH compliant also PAH-Free rubber to confirm to EU-directive 2005/69/EC



Diameter (mm)	125
Castor Type	Swivel with Total Lock Brake
Fixing Option	Plate
Height (mm)	155
Wheel Material	Rubber on Nylon
Colour / Shore Hardness	Blue Elastic Rubber on Nylon Rim / 65 Shore A
Temperature Resistance	-30 °C TO +80 °C
Bearing Type	Roller
Load Capacity (kg)	250
Tread (mm)	36
Swivel Radius (mm)	120
Plate Size (mm)	105 x 86
Hole Centres (mm)	80 X 60
Top Plate Thickness (mm)	3
Fork Thickness (mm)	3
To Suit Fixing Bolt (mm)	8

BIL GROUP LTD

Porte Marsh Road, Calne, Wiltshire, SN11 9BW

Registered in England No: 2603821

VAT Reg: GB572705729

