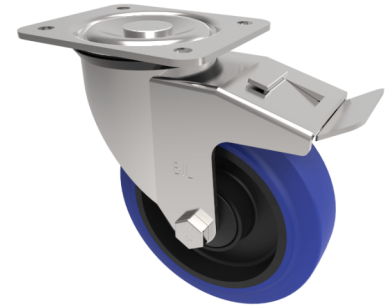


## Blue Elastic Rubber 65ShoreA Plate Swivel Castor Brake 125mm 250kg Load

**Product code: BZEH125SRNBJSWBLP**



Pressed steel swivel castor with a top plate fixing fitted with a 65 shore A blue elastic rubber on nylon centred wheel with a single ball bearing and retaining caps and a total lock brake. Wheel diameter 125mm, tread width 36mm, overall height 156mm, top plate 135mm x 110mm, hole centres 105mm x 80mm or 116mm x 92.5mm Load capacity 250kg.g. REACH compliant also PAH-Free rubber to confirm to EU-directive 2005/69/EC

Diameter (mm)	125
Castor Type	Swivel with Total Lock Brake
Fixing Option	Plate
Height (mm)	155
Wheel Material	Rubber on Nylon
Colour / Shore Hardness	Blue Elastic Rubber on Nylon Rim / 65 Shore A
Temperature Resistance	-30 °C TO +80 °C
Bearing Type	Ball
Load Capacity (kg)	250
Tread (mm)	36
Swivel Radius (mm)	120
Plate Size (mm)	135 x 110
Hole Centres (mm)	105/116 x 80/64
Top Plate Thickness (mm)	3
Fork Thickness (mm)	3
To Suit Fixing Bolt (mm)	10

## BIL GROUP LTD

Porte Marsh Road, Calne, Wiltshire, SN11 9BW

Registered in England No: 2603821

VAT Reg: GB572705729

