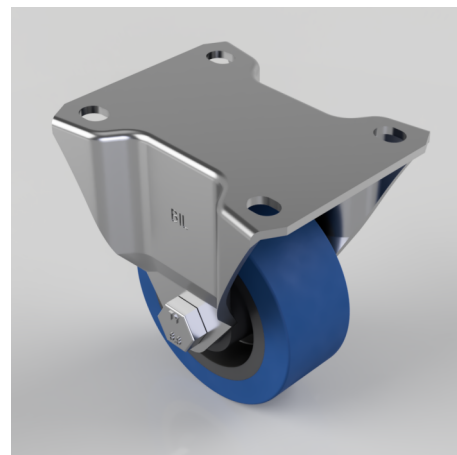


Blue Elastic Rubber 65ShoreA Plate Fixed Castor 80mm 150kg Load

Product code: BZHF80SRNB

Pressed steel fixed castor fitted with a 65 shore A blue elastic rubber tyre wheel with a black nylon centre with a roller bearing. Wheel diameter 80mm, Tread width 34mm, Overall Height 110mm, Top Plate 105mm x 86mm, Hole Centres 80mm x 60mm, Load Capacity 150kg. REACH compliant also PAH-Free rubber to confirm to EU-directive 2005/69/EC



| | |
|--------------------------|---|
| Diameter (mm) | 80 |
| Castor Type | Fixed |
| Fixing Option | Plate |
| Height (mm) | 110 |
| Wheel Material | Rubber on Nylon |
| Colour / Shore Hardness | Blue Elastic Rubber on Nylon Rim / 65 Shore A |
| Temperature Resistance | -30 °C TO +80 °C |
| Bearing Type | Roller |
| Load Capacity (kg) | 150 |
| Tread (mm) | 34 |
| Plate Size (mm) | 105 x 86 |
| Hole Centres (mm) | 80 X 60 |
| Top Plate Thickness (mm) | 3 |
| Fork Thickness (mm) | 3 |
| To Suit Fixing Bolt (mm) | 8 |

BIL GROUP LTD

Porte Marsh Road, Calne, Wiltshire, SN11 9BW

Registered in England No: 2603821

VAT Reg: GB572705729

