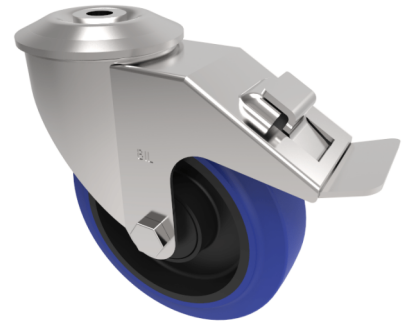


## Blue Elastic Rubber 65ShoreA Bolt Hole Swivel Castor Brake 125mm 200kg

**Product code: BZMM125SRNBJBH12SWB**

Pressed steel swivel castor with a 12mm bolt hole fitted with 65 shore A blue elastic rubber tyre nylon centred wheel with a single ball bearing with retaining caps and swivel wheel brake. Wheel diameter 125mm, tread width 36mm, overall height 156mm, Load capacity 200kg. REACH compliant also PAH-Free rubber to confirm to EU-directive 2005/69/EC



Diameter (mm)	125
Castor Type	Swivel with Total Lock Brake
Fixing Option	Bolt Hole
Height (mm)	155
Wheel Material	Rubber on Nylon
Colour / Shore Hardness	Blue Elastic Rubber on Nylon Rim / 65 Shore A
Temperature Resistance	-30 °C TO +80 °C
Bearing Type	Ball
Load Capacity (kg)	200
Tread (mm)	36
Swivel Radius (mm)	135
Head Dia (mm)	76
Fork Thickness (mm)	2
To Suit Fixing Bolt (mm)	12

## BIL GROUP LTD

Porte Marsh Road, Calne, Wiltshire, SN11 9BW

Registered in England No: 2603821

VAT Reg: GB572705729

