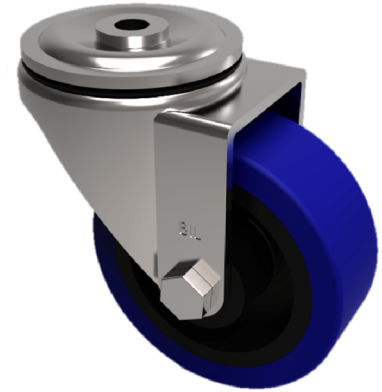


Blue Elastic Rubber 65ShoreA Bolt Hole Swivel Castor 80mm 150kg Load

Product code: SSEH80SRNBH12



Grade 304 Pressed stainless steel swivel castor with a 12mm bot hole fitted with a 65 shore A blue elastic rubber tyred wheel with a black nylon centre with a plain bore. Wheel diameter 80mm, Tread width 35mm, Overall Height 110mm, Load Capacity 150kg. REACH compliant also PAH-Free rubber to confirm to EU-directive 2005/69/EC

Diameter (mm)	80
Fixing Option	Bolt Hole
Castor Type	Swivel
Height (mm)	110
Wheel Material	Rubber on Nylon
Colour / Shore Hardness	Blue Elastic Rubber on Nylon Rim / 65 Shore A
Bearing Type	Plain
Tread (mm)	35
Fork Thickness (mm)	3
To Suit Fixing Bolt (mm)	12
Load Capacity (kg)	150
Temperature Resistance	-30 °C TO +80 °C
Head Dia (mm)	78
Swivel Radius (mm)	80

BIL GROUP LTD

Porte Marsh Road, Calne, Wiltshire, SN11 9BW

Registered in England No: 2603821

VAT Reg: GB572705729

