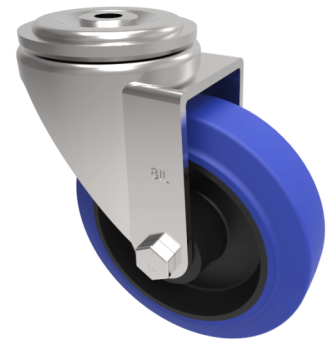


## Blue Elastic Rubber 65ShoreA Bolt Hole Swivel Castor 125mm 250kg Load

**Product code: BZH125SRNBJBH12**

Pressed steel swivel castor with a 12mm bolt hole fitted with a 65 Shore A blue elastic rubber tyre on black nylon centre wheel with single ball bearing and retaining caps. Wheel diameter 125mm, tread width 36mm, overall height 156mm, Load capacity 250kg. REACH compliant also PAH-Free rubber to confirm to EU-directive 2005/69/EC



Diameter (mm)	125
Castor Type	Swivel
Fixing Option	Bolt Hole
Height (mm)	156
Wheel Material	Rubber on Nylon
Colour / Shore Hardness	Blue Elastic Rubber on Nylon Rim / 65 Shore A
Temperature Resistance	-30 °C TO +80 °C
Bearing Type	Ball
Load Capacity (kg)	250
Tread (mm)	36
Swivel Radius (mm)	104
Head Dia (mm)	76
Fork Thickness (mm)	4
To Suit Fixing Bolt (mm)	12

## BIL GROUP LTD

Porte Marsh Road, Calne, Wiltshire, SN11 9BW

Registered in England No: 2603821

VAT Reg: GB572705729

