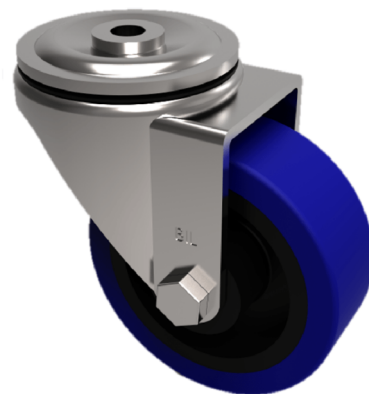


Blue Elastic Rubber 65ShoreA Bolt Hole Swivel Castor 100mm 180kg Load

Product code: SSMM100SRNBBH12

Grade 304 Pressed stainless steel swivel castor with a 12mm bolt hole fixing fitted with a blue 65 shore A elastic rubber tyre on black nylon centred wheel with a roller bearing. Wheel diameter 100mm, tread width 36mm, overall height 128mm. Load capacity 180kg..REACH compliant also PAH-Free rubber to confirm to EU-directive 2005/69/EC



Diameter (mm)	100
Fixing Option	Bolt Hole
Castor Type	Swivel
Height (mm)	128
Wheel Material	Rubber on Nylon
Colour / Shore Hardness	Blue Elastic Rubber on Nylon Rim / 65 Shore A
Bearing Type	Roller
Tread (mm)	36
Fork Thickness (mm)	2
To Suit Fixing Bolt (mm)	12
Load Capacity (kg)	180
Temperature Resistance	-30 °C TO +80 °C
Head Dia (mm)	76
Swivel Radius (mm)	84

BIL GROUP LTD

Porte Marsh Road, Calne, Wiltshire, SN11 9BW

Registered in England No: 2603821

VAT Reg: GB572705729

