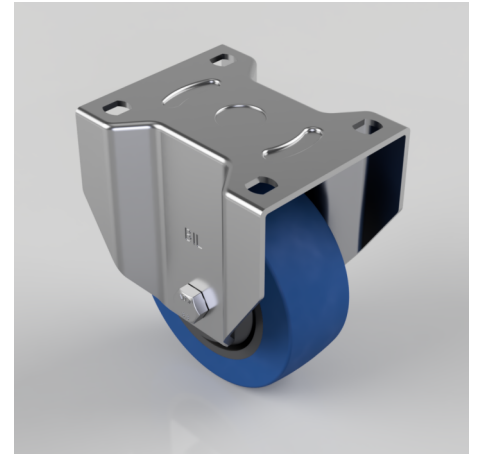


## Blue Elastic Rubber 65Shore A Plate Fixed Castor 125mm 275kg Load

**Product code: BZPF125SRNBJ**

Pressed steel fixed castor with a flat plate fixing fitted with a blue 65 shore A elastic rubber tyre on black nylon centred wheel with ball bearings. Wheel diameter 125mm, tread width 50mm, overall height 164mm, plate size 135mm x 110mm, hole centres 105mm x 80mm. Load capacity 275kg.



Diameter (mm)	125
Castor Type	Fixed
Fixing Option	Plate
Height (mm)	164
Wheel Material	Rubber on Nylon
Colour / Shore Hardness	Blue Elastic Rubber on Nylon Rim / 65 Shore A
Temperature Resistance	-30 °C TO +80 °C
Bearing Type	Ball
Load Capacity (kg)	275
Tread (mm)	50
Plate Size (mm)	135 x 110
Hole Centres (mm)	105 x 80
Top Plate Thickness (mm)	3.5
Fork Thickness (mm)	3.5
To Suit Fixing Bolt (mm)	12

### BIL GROUP LTD

Porte Marsh Road, Calne, Wiltshire, SN11 9BW

Registered in England No: 2603821

VAT Reg: GB572705729

