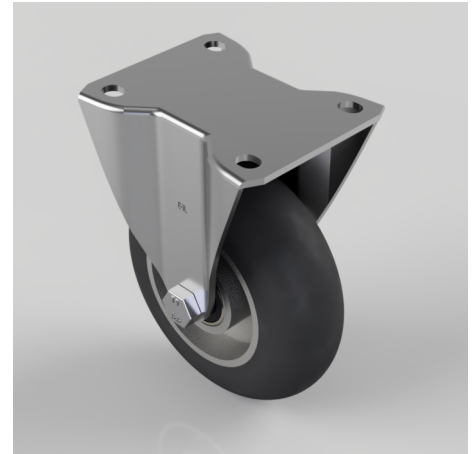


## Black Soft Elastic Rubber Plate Fixed Castor 125mm 200kg Load

**Product code: BZHF125SRERBJ**

Pressed steel fixed castor with a top plate fixing with a black ergonomic grey high elastic natural 55 shore A round profile rubber tyred wheel with a aluminium centre with a ball bearing. Wheel diameter 125mm, tread width 40mm, overall height 156mm, top plate 105mm x 86mm, hole centres 80mm x 60mm. Load capacity 200kg. REACH compliant also PAH-Free rubber to confirm to EU-directive 2005/69/EC, also available with flat tread details on request



Diameter (mm)	125
Castor Type	Fixed
Fixing Option	Plate
Height (mm)	156
Wheel Material	Rubber on Aluminium
Colour / Shore Hardness	Black Ergonomic Rubber on Aluminium Rim / 55 Shore A
Temperature Resistance	-30 °C TO +80 °C
Bearing Type	Ball
Load Capacity (kg)	200
Tread (mm)	40
Plate Size (mm)	105 x 86
Hole Centres (mm)	80 X 60
Top Plate Thickness (mm)	3
Fork Thickness (mm)	3
To Suit Fixing Bolt (mm)	8

### BIL GROUP LTD

Porte Marsh Road, Calne, Wiltshire, SN11 9BW

Registered in England No: 2603821

VAT Reg: GB572705729

