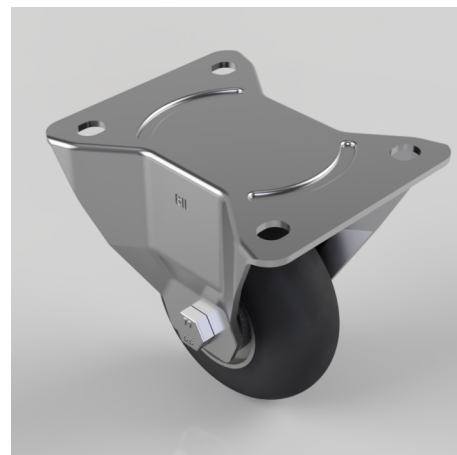


## Black Soft Elastic Rubber Plate Fixed Castor 100mm 150kg Load

**Product code: BZPHF100SRERBJ**

Pressed steel fixed castor with a top plate fixing with a black ergonomic high elastic natural 55 shore A round profile rubber tyre wheel with an aluminium centre with a ball bearing. Wheel diameter 100mm, tread width 40mm, overall height 132mm, top plate 135mm x 110mm, hole centres 105mm x 80/75mm. Load capacity 150kg. REACH compliant also PAH-Free rubber to confirm to EU-directive 2005/69/EC, also available with flat tread details on request



|                          |  |
|--------------------------|--|
| Diameter (mm)            | 100  |
| Castor Type              | Fixed  |
| Fixing Option            | Plate  |
| Height (mm)              | 132  |
| Wheel Material           | Rubber on Aluminium                                  |
| Colour / Shore Hardness  | Black Ergonomic Rubber on Aluminium Rim / 55 Shore A |
| Temperature Resistance   | -30 °C TO +80 °C                                     |
| Bearing Type             | Ball   |
| Load Capacity (kg)       | 150  |
| Tread (mm)               | 40   |
| Plate Size (mm)          | 135 x 115  |
| Hole Centres (mm)        | 105 x 80/75  |
| Top Plate Thickness (mm) | 3  |
| Fork Thickness (mm)      | 3  |
| To Suit Fixing Bolt (mm) | 10   |

## BIL GROUP LTD

Porte Marsh Road, Calne, Wiltshire, SN11 9BW

Registered in England No: 2603821

VAT Reg: GB572705729

