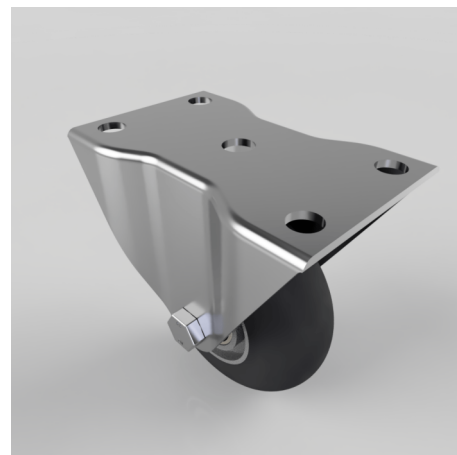


## Black Soft Elastic Rubber Plate Fixed Castor 100mm 150kg Load

**Product code: BZHF100SRERBJLP**

Pressed steel fixed castor with a top plate fixing fitted with an ergonomic black high elastic natural 55 shore A rubber tyre aluminium centred wheel with ball bearings. Wheel diameter 100mm, tread width 40mm, overall height 126mm, top plate 122mm x 78mm, hole centres 100mm x 48mm Load capacity 150kg REACH compliant also PAH-Free rubber to confirm to EU-directive 2005/69/EC



Diameter (mm)	100
Castor Type	Fixed
Fixing Option	Plate
Height (mm)	127
Wheel Material	Rubber on Aluminium
Colour / Shore Hardness	Black Ergonomic Rubber on Aluminium Rim / 55 Shore A
Temperature Resistance	-30 °C TO +80 °C
Bearing Type	Ball
Load Capacity (kg)	150
Tread (mm)	40
Plate Size (mm)	122 x 77
Hole Centres (mm)	100 x 48
Top Plate Thickness (mm)	3
Fork Thickness (mm)	3
To Suit Fixing Bolt (mm)	10

## BIL GROUP LTD

Porte Marsh Road, Calne, Wiltshire, SN11 9BW

Registered in England No: 2603821

VAT Reg: GB572705729

