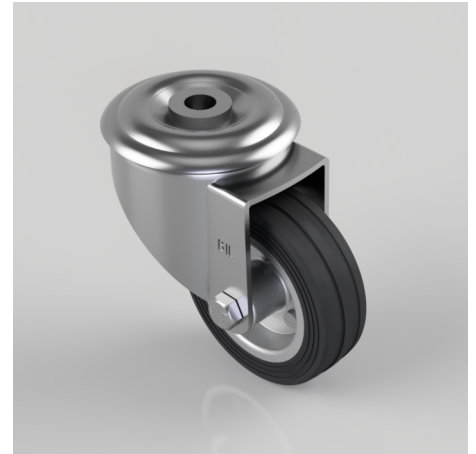


## Black Rubber Pressed Steel Bolt Hole Swivel Castor 80mm 50kg Load

**Product code: BZMM80BSBBH12**

Pressed steel swivel castor with a 12mm bolt hole fixing fitted with a black rubber tyre on steel disc centred wheel with a roller bearing. Wheel diameter 80mm, tread width 24mm, overall height 105mm, Load capacity 50kg.



Diameter (mm)	80
Castor Type	Swivel
Fixing Option	Bolt Hole
Height (mm)	105
Wheel Material	Rubber on Steel
Colour / Shore Hardness	Black Rubber on Steel Rim / 85 Shore A
Temperature Resistance	-20 °C TO +60 °C
Bearing Type	Roller
Load Capacity (kg)	50
Tread (mm)	24
Swivel Radius (mm)	78
Head Dia (mm)	76
Fork Thickness (mm)	2.5
To Suit Fixing Bolt (mm)	12

## BIL GROUP LTD

Porte Marsh Road, Calne, Wiltshire, SN11 9BW

Registered in England No: 2603821

VAT Reg: GB572705729

