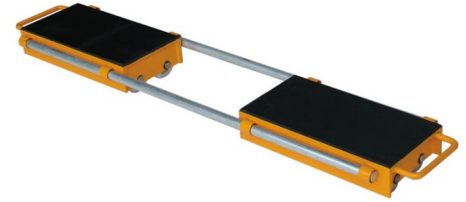


Adjustable Skate 24tonne

Product code: SKADSK24



An adjustable skate for moving heavy machinery & industrial equipment loads of up to 24tonne (24,000kg). Actually two skates in one, connected by two removable steel rods and adjustable from 500mm to 1400mm.

- Helps to protect the floor via the large diameter rollers
- Load slippage risk is reduced via the rubber non-slip pads
- Compatible with [3, 6 & 12tonne steerable skates](#)
- Other load ratings available

Roller type	Steel
Bar length	1200mm
Load plate area width	210mm
Number of rollers	16
Load plate area length	415mm
Weight	65Kg
Length	500mm
Load capacity	24000Kg
Height	105mm
Width	290mm
Skate/jack type	Machine skates

BIL GROUP LTD

Porte Marsh Road, Calne, Wiltshire, SN11 9BW

Registered in England No: 2603821

VAT Reg: GB572705729

