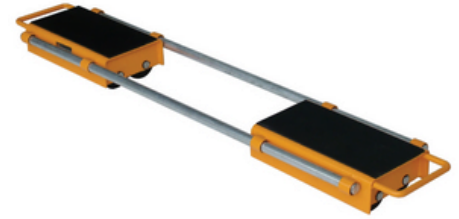


## Adjustable Skate 12tonne

**Product code: SKADSK12**



A laterally adjustable skate for moving heavy machinery & industrial equipment loads of up to 12tonne (12,000kg). Actually two skates in one, connected by two removable steel rods and adjustable from 500mm to 1400mm.

- Helps to protect the floor via the large diameter rollers
- Load slippage risk is reduced via the rubber non-slip pads
- Often used in combination with the 12tonne steerable skate [SKSTSK12](#) for a total load rating of 24tonne.
- Other load ratings available

Load capacity	12000Kg
Height	105mm
Width	270mm
Length	420mm
Weight	38Kg
Load plate area length	345mm
Load plate area width	190mm
Number of rollers	12
Roller type	Nylon
Bar length	1200mm
Skate/jack type	Machine skates

## BIL GROUP LTD

Porte Marsh Road, Calne, Wiltshire, SN11 9BW

Registered in England No: 2603821

VAT Reg: GB572705729

