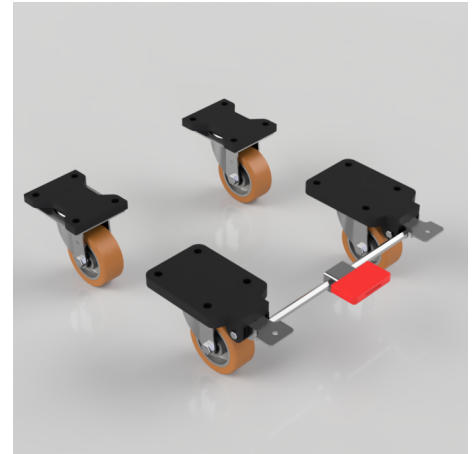


4 Pack Polyurethane Plate Ball Bearing 80mm 600kg Load Per Set

Product code: BZE80PABJFP/SB/SET

Two swivel and two bonded pressed steel castors with a top plate fixing are fitted with a brown polyurethane tyred aluminium centred wheel with ball bearing. The wheel diameter is 80mm, the tread width is 30mm, the overall height is 124mm, the plate size is 135mm x 105mm, and the hole centres are 105mm x 80mm. The load capacity is 200kg per castor, and 600kg per set.



Bearing Type	Ball
Castor Type	Swivel, Swivel with Total Lock Brake
Colour / Shore Hardness	Brown Polyurethane on Aluminium Rim / 93 Shore A
Diameter (mm)	80
Fixing Option	Plate
Fork Thickness (mm)	3.5
Height (mm)	124
Hole Centres (mm)	105 x 80
Load Capacity (kg)	600 Per Set
Temperature Resistance	-20 °C TO +70 °C
To Suit Fixing Bolt (mm)	10
Top Plate Thickness (mm)	14
Tread (mm)	30
Wheel Material	Polyurethane on Aluminium
Plate Size (mm)	135 x 105

BIL GROUP LTD

Porte Marsh Road, Calne, Wiltshire, SN11 9BW

Registered in England No: 2603821

VAT Reg: GB572705729

