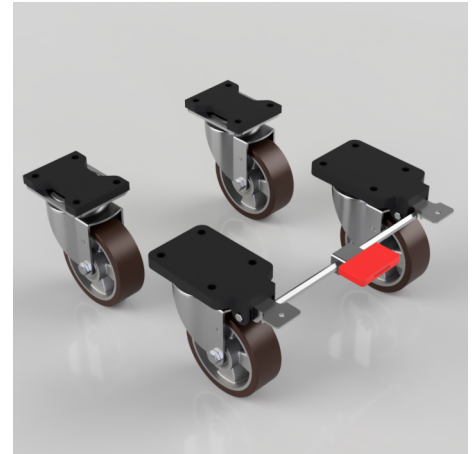


4 Pack Brown Polyurethane Plate Ball Bearing 150mm 1500kg Load Per Set - various configurations

Product code: BZSPH150PABJFP/SET

4 x pressed steel castors with a top plate fixing fitted with a polyurethane tyre and aluminium-centred wheel with ball bearings. Wheel diameter 150mm, tread width 50mm, overall height 204mm, top plate 135mm x 110mm, hole centres 105mm x 80mm. Load capacity 500kg per castor, 1500kg load capacity per set.



Bearing Type	Ball
Castor Type	Fixed, Swivel, Swivel with Total Lock Brake
Colour / Shore Hardness	Brown Polyurethane on Aluminium Rim / 93 Shore A
Configuration	2 x Fixed + 2 x Braked, 2 x Swivel + 2 x Braked, 2 x Swivel + 2 x Fixed
Diameter (mm)	150
Fixing Option	Plate
Fork Thickness (mm)	5
Height (mm)	204
Hole Centres (mm)	105 x 80
Load Capacity (kg)	1500 per set
Swivel Radius (mm)	128 Swivel / 164 Braked
Temperature Resistance	-20 °C TO +70 °C
To Suit Fixing Bolt (mm)	10
Top Plate Thickness (mm)	19
Tread (mm)	50
Wheel Material	Polyurethane on Aluminium
Plate Size (mm)	84 x 72