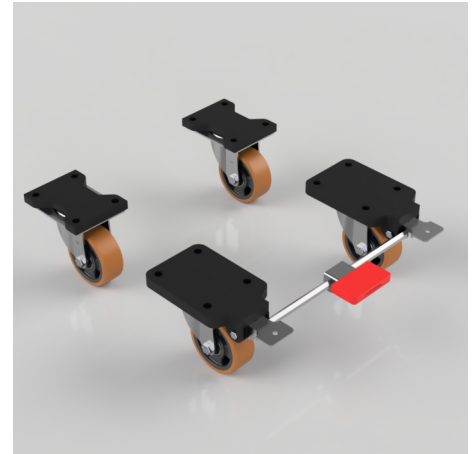


## 4 Pack Brown Polyurethane Plate Ball Bearing 100mm 900kg Load Per Set - various configurations

**Product code: BZEH100XPNBJFP/SET**

4 x pressed steel castors with a top plate fixing fitted with a brown polyurethane tyre on a black nylon centred wheel with ball bearings. Wheel diameter 100mm, tread width 40mm, height 144mm, top plate 135mm x 105mm, hole centres 105mm x 80mm. Load capacity 300kg per castor, 900kg load capacity per set.



Bearing Type	Ball
Castor Type	Fixed, Swivel, Swivel with Total Lock Brake
Colour / Shore Hardness	Brown Polyurethane on Cast Iron Rim / 94 Shore A
Configuration	2 x Fixed + 2 x Braked, 2 x Swivel + 2 x Braked, 2 x Swivel + 2 x Fixed
Diameter (mm)	125
Fixing Option	Plate
Fork Thickness (mm)	3
Height (mm)	170
Hole Centres (mm)	105 x 80
Load Capacity (kg)	900 Per Set
Swivel Radius (mm)	90 Swivel / 164 Braked
Temperature Resistance	-20 °C TO +70 °C
To Suit Fixing Bolt (mm)	10
Top Plate Thickness (mm)	18
Tread (mm)	40
Wheel Material	Polyurethane on Aluminium
Plate Size (mm)	84 x 72

### BIL GROUP LTD

Porte Marsh Road, Calne, Wiltshire, SN11 9BW

Registered in England No: 2603821

VAT Reg: GB572705729

