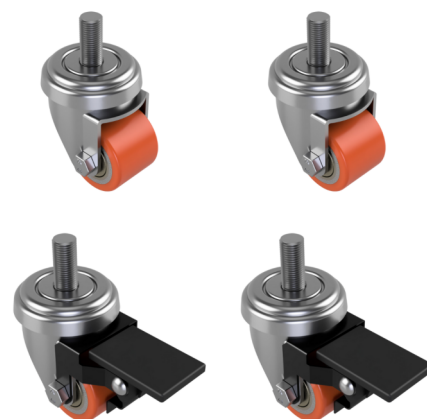


4 Pack 2 x Swivel 2 x Braked Polyurethane Cast Iron Stem 35mm 300kg Load Per Set

Product code: BZXH35PTBJST10/SET

4 pack pressed steel 2 x swivel and 2 x swivel with total lock brake castor with a 10mm threaded stem fitted with a Polyurethane wheel with a ball Bearing. Wheel diameter 35mm, tread width 27mm, overall height 58mm. Load capacity 100kg per castor / 300kg Total set load.



Diameter (mm)	35
Fixing Option	Stem
Castor Type	Fixed, Swivel, Swivel with Total Lock Brake
Height (mm)	58
Bearing Type	Ball
Swivel Radius (mm)	31 Swivel / 65 Braked
Wheel Material	Polyurethane on Cast Iron
Colour / Shore Hardness	Orange Polyuerthane on Steel Rim / 94 Shore A
Fork Thickness (mm)	2
Temperature Resistance	"-10 °C TO +80 °C
To Suit Fixing Bolt (mm)	M10 x 25
Tread (mm)	27
Head Dia (mm)	46
Configuration	2 x Swivel + 2 x Braked
Load Capacity (kg)	300 kg Load Per Set

BIL GROUP LTD

Porte Marsh Road, Calne, Wiltshire, SN11 9BW

Registered in England No: 2603821

VAT Reg: GB572705729

