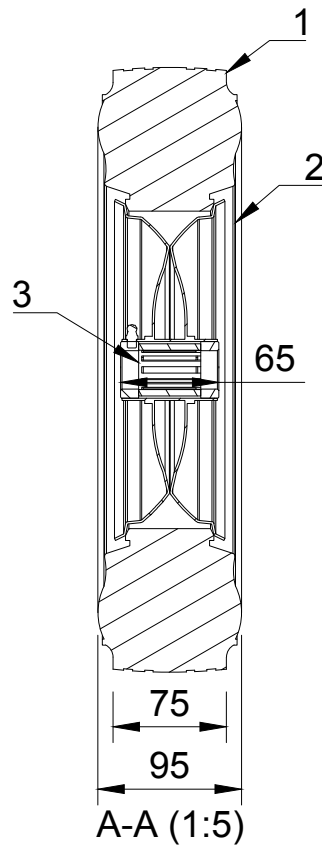
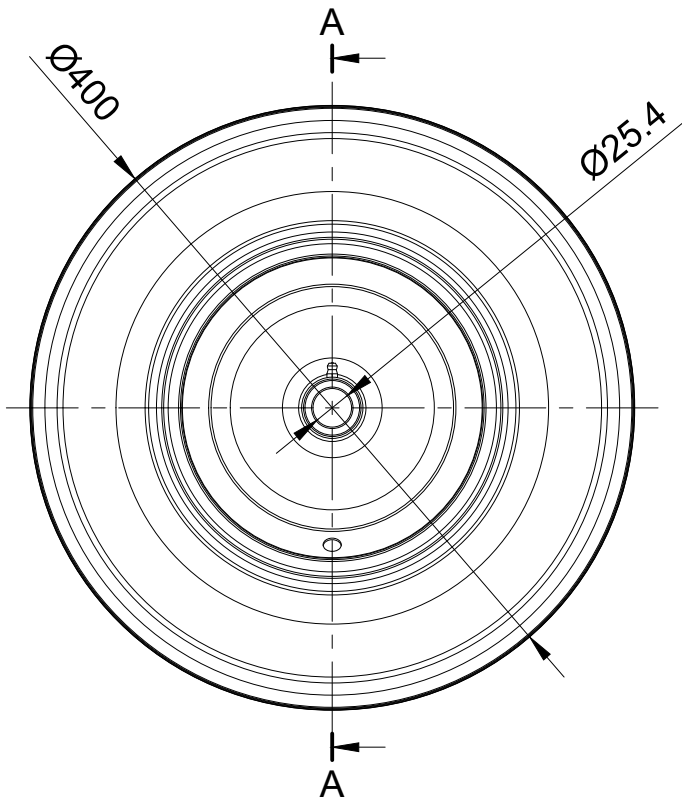


ITEM NO.	PART NUMBER	QTY
1	RUBBER TYRE	1
2	STEEL RIM	1
3	ROLLER BEARING	1



UNLESS OTHERWISE SPECIFIED DIMENSIONS ARE IN MILLIMETRES Unspecified Tolerances Machining ± 0.25mm Fabrication ± 1mm	DRAWING DISCLAIMER COPYRIGHT OF THIS DRAWING IS RESERVED BY BIL GROUP LTD. IT IS NOT REPRODUCED, COPIED, OR DISCLOSED TO A THIRD PARTY EITHER WHOLLY OR IN PART WITHOUT THE CONSENT IN WRITING OF BIL GROUP LTD		NAME	DATE	<div><div><div><div><div></div><div>BILGroup</div></div><div>BIL Group Ltd Porte Marsh Road Calne, Wiltshire, SN11 9BW United Kingdom Tel +44 (0)1249 822 222 www.bilgroup.co.uk</div></div><div><div><div></div><div>VARLEY</div></div><div>H Varley Ltd Unit 5 Century Park Pacific Rd Broadheath, Altrincham, Cheshire WA14 5BJ Tel +44 (0)161 928 9617 www.varley-castors.co.uk</div></div></div></div>		
		DRAWN BY	Matt	27/05/25	DWG NO.	VBW405-1RB	REV
		APPROVED BY	Chris B	27/05/25			1
		SCALE	1:5				
		WEIGHT	10.104kg		VBW405-1RB		SHEET 1 OF 1